


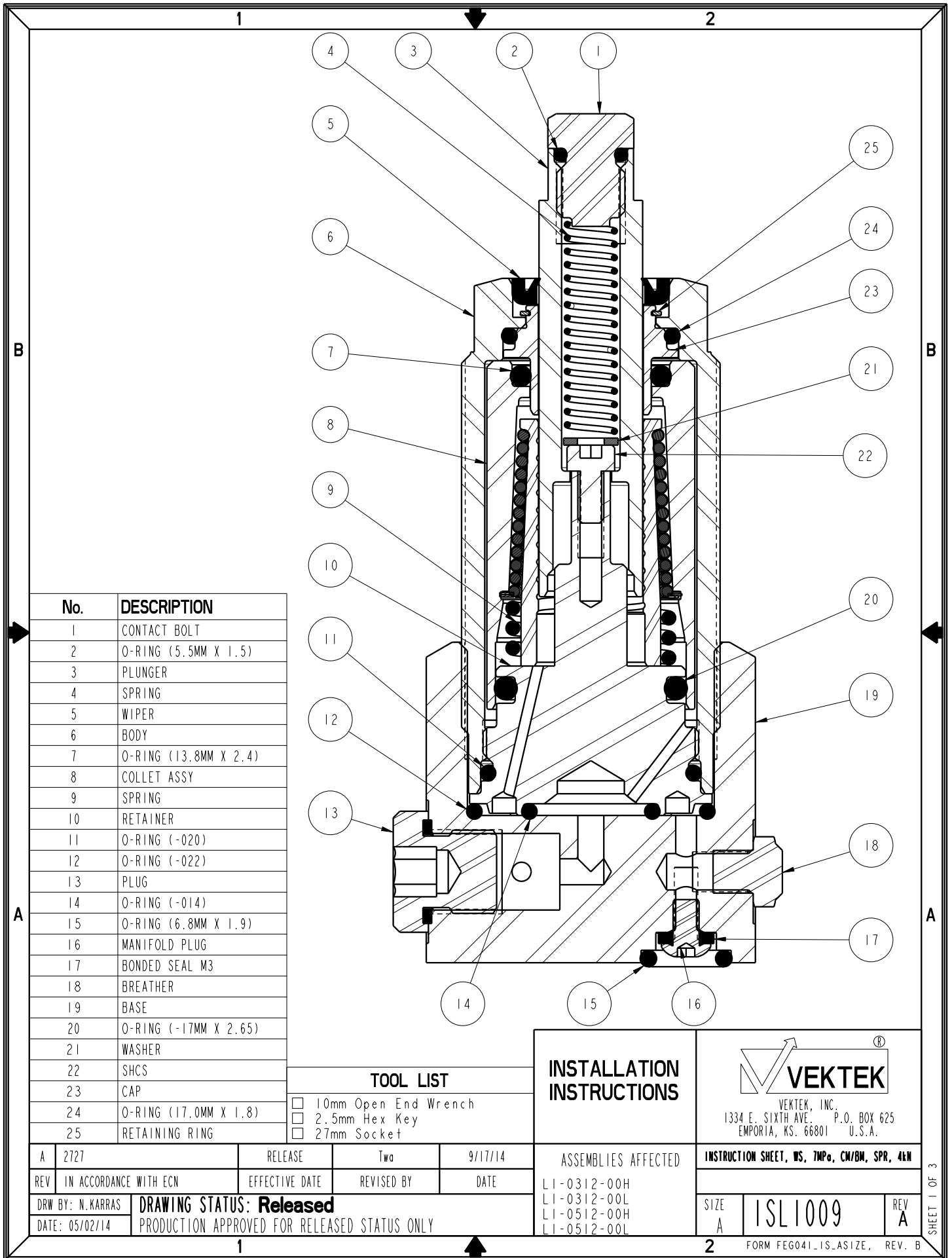
| NO | QTY | PART NO | DESCRIPTION | STD SEAL KIT | LIGHT SPRING KIT | HEAVY SPRING KIT |
|-----|-----|----------|--|--------------|------------------|------------------|
| 1 | 2 | 21500019 | SCREW, CAP, BTNH, M3 X 6, ALY | | | |
| 2 | 1 | 23350101 | SPRING, COMPRESSION | | | X |
| 3 | 1 | 39050085 | O-RING, (-022) | X | | |
| 4 | 1 | 39051108 | O-RING, (5.5mm X 1.5) | X | X | X |
| 5 | 1 | 39051114 | O-RING, (-014) | X | | |
| 6 | 2 | 39051116 | O-RING, (6.8mm X 1.9) | X | | |
| 7 | 1 | 39053050 | WIPER, PRESS-IN, 12mm | X | | |
| 8 | 2 | 39055011 | SEAL, BONDED, M3 | X | | |
| 9 | 2 | 43068004 | PLUG, SOCH, G1/8 | | | |
| 10 | 1 | 81000031 | CONTACT BOLT, WS, 7MPa, 4kN | | | |
| 11 | 1 | 91000045 | BASE, WS, 7MPa, 4kN | | | |
| 12 | 1 | 23350100 | SPRING, COMPRESSION | | X | |
| N/A | N/A | L6010006 | KIT, SEAL, WS, 7MPa, CM/BM, 4kN | NOTED | N/A | N/A |
| N/A | N/A | L6110016 | KIT, SPRING, WS, 7MPa, CM/BM, 4kN | N/A | NOTED | N/A |
| N/A | N/A | L6110017 | KIT, SPRING, WS, 7MPa, CM/BM, 4kN | N/A | N/A | NOTED |
| N/A | N/A | ISL1009 | INSTRUCTION SHEET, WS, 7MPa, CM/BM, SPR, 4kN | N/A | N/A | N/A |

See Instruction Sheet ISL1009 For Service Instructions.
 Lubricate All Seals With Clean Hydraulic Oil Prior To Assembly.
 Do Not Use Silicone Base Lubricants.



| | |
|---|--|
| PARTS LIST |  VEKTEK VEKTEK, INC. 1334 E. SIXTH AVE. P.O. BOX 625 EMPORIA, KS. 66801 U.S.A. |
| | PARTS LIST, ASSY, WS, 7MPa, BM, SPR, 4kN |
| ASSEMBLIES AFFECTED L1-0512-00H L1-0512-00L | SIZE A LPL1017 |
| FORM FEG035_PL_ASIZE, REV. B | |

| | | | | |
|---------|------------------------|---|------------|--------|
| C | 3849 | RELEASE | MJUST | 7/8/19 |
| REV | IN ACCORDANCE WITH ECN | EFFECTIVE DATE | REVISED BY | DATE |
| DRW BY: | Twa | DRAWING STATUS: Released PRODUCTION APPROVED FOR RELEASED STATUS ONLY | | |
| DATE: | 05/01/14 | | | |



| No. | DESCRIPTION |
|-----|-----------------------|
| 1 | CONTACT BOLT |
| 2 | O-RING (5.5MM X 1.5) |
| 3 | PLUNGER |
| 4 | SPRING |
| 5 | WIPER |
| 6 | BODY |
| 7 | O-RING (13.8MM X 2.4) |
| 8 | COLLET ASSY |
| 9 | SPRING |
| 10 | RETAINER |
| 11 | O-RING (-020) |
| 12 | O-RING (-022) |
| 13 | PLUG |
| 14 | O-RING (-014) |
| 15 | O-RING (6.8MM X 1.9) |
| 16 | MANIFOLD PLUG |
| 17 | BONDED SEAL M3 |
| 18 | BREATHER |
| 19 | BASE |
| 20 | O-RING (-17MM X 2.65) |
| 21 | WASHER |
| 22 | SHCS |
| 23 | CAP |
| 24 | O-RING (17.0MM X 1.8) |
| 25 | RETAINING RING |

| TOOL LIST | |
|--------------------------|----------------------|
| <input type="checkbox"/> | 10mm Open End Wrench |
| <input type="checkbox"/> | 2.5mm Hex Key |
| <input type="checkbox"/> | 27mm Socket |

INSTALLATION INSTRUCTIONS

VEKTEK, INC.
1334 E. SIXTH AVE. P.O. BOX 625
EMPORIA, KS. 66801 U.S.A.

| | | | | |
|---------|------------------------|--|------------|---------|
| A | 2727 | RELEASE | Two | 9/17/14 |
| REV | IN ACCORDANCE WITH ECN | EFFECTIVE DATE | REVISED BY | DATE |
| DRW BY: | N. KARRAS | DRAWING STATUS: Released | | |
| DATE: | 05/02/14 | PRODUCTION APPROVED FOR RELEASED STATUS ONLY | | |

ASSEMBLIES AFFECTED
 LI-0312-00H
 LI-0312-00L
 LI-0512-00H
 LI-0512-00L

| | |
|---|---------|
| INSTRUCTION SHEET, WS, 7MP, CW/BM, SPR, 4IN | |
| SIZE A | ISL1009 |
| REV A | |

Read all instructions before disassembly

Refer to the illustration on page 1 for component descriptions and tool list

Disassembly


Model Number L1-0312-00H & L1-0312-00L

1. Using a 27mm socket, unscrew work support from fixture or base (19). Wipe clean to remove external contaminants.
2. Remove O-ring (14) from retainer (10) s'face or cavity (19). Be careful not to damage retainer (10) face.
3. Remove O-ring (12) from fixture or base cavity.
4. With 10mm wrench at plunger (3) and 10mm wrench at contact bolt (1), unscrew contact bolt (1) from plunger (3). Remove O-ring (2) from contact bolt (1).
5. Remove contact spring (4) and washer (21) from inside plunger (3).
6. Insert 2.5mm hex key into cap screw (22) inside plunger (3) and unscrew cap screw (22). Remove cap screw (22) from inside plunger (3).
7. Gently slide plunger (3) out from top of work support.
8. Remove wiper (5) from top of body (6). Be careful not to damage wiper bore or bore below wiper (5). To assist holding body (6) during wiper (5) removal, body (6) may be threaded into base (19) or fixture, be careful not to damage the body (6) or retainer face (10).
9. Thoroughly clean contact bolt (1), contact spring (4), plunger (3), cap screw (22), washer (21) and set aside to dry.
10. Wipe clean retainer (10) face located on bottom of work support. Wipe clean wiper bore located in body at top of work support.
11. Wipe clean work support cavity in fixture.

Model Number L1-0512-00H & L1-0512-00L

13. Remove work support base (19) from fixture and complete disassembly steps 1-10.
14. If work support hydraulics or vent is manifold fed from fixture, remove O-ring (15) from manifold s'face on base mounting face (2 places).
15. If work support hydraulics or vent is not manifold fed, insert 3mm hex key into plug (16) located at base (19) mounting face and unscrew plug (16) (2 places). Remove bonded seal (17) from plug (16).
16. Thoroughly clean base (19), plugs (16) and set aside to dry.

Caution: Do not expose work support clamping mechanism (8) located above retainer (10) to any type of cleaning solutions. Removal of retainer (10) or clamping mechanism (8) terminates product warranty.

| | | |
|---|---------|----------|
|  | | |
| VEKTEK, INC. 1334 E. SIXTH AVE. P.O. BOX 625 EMPORIA, KS. 66801 U.S.A. | | |
| INSTRUCTION SHEET, WS, 7MPo, CW/BM, SPR, 4IN | | |
| SIZE A | ISL1009 | REV A |
| FORM FEG041-1S-ASIZE, REV. B | | |

